



Door Hardware

DHW (EN)





Table of Contents



05 Door Closers



14 Floor Spring



17 Locks



22 Cylinders



26 Lever Handles



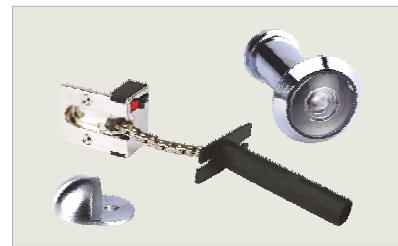
33 Pull Handles



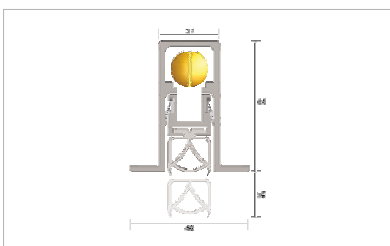
35 Hinges



38 Panic Hardware



43 Accessories



45 Seals



47 Electrified Hardware

Why Door Hardware?

Architect, builder or designer – you find the door hardware solution for your residential or commercial project in the dormakaba product cluster. Security, function, and visual appeal are the foundation of door hardware that architects, builders, designers and end users expect from dormakaba. With the use of high-grade materials, precise production techniques and a comprehensive quality management system, dormakaba provides solution for all type of door applications. From controlling movement of door to secured locking solutions, from Elegant door furniture to smoke and acoustic seals we offer the right solution for the right application.



Door Closers





Door Closer

Cam Action Technology

The dormakaba CAM action door closer combines technical superiority with outstanding value, and unites advanced design with convenient functionality - all on the basis of its heart shaped cam. The doorclosers are manufactured as per European Standard EN 1154.

All the doorclosers are tested for durability of 500,000 cycles.

Model	Closing Force	Max. Door Width	Fire Rated	Closing Speed (Valve)	Latching Speed (Valve)	Backcheck	Delayed Action	Hold-open
TS 97	EN (2-4)	1100	Yes	180 - 15°	15 - 0°	No	No	Optional
	EN (2-5)	1250	Yes	180 - 7°	7 - 0°	Yes - Valve	Yes - Valve	Optional-RF/ EMF/EMR
TS 93 B/G	EN (5-7)	1600	Yes	180 - 7°	7 - 0°	Yes - Valve	Yes - Valve	Optional-RF/ EMF/EMR
TS 92	EN (1-4)	1100	Yes	180 - 15°	15 - 0°	No	No	Optional (RF)
TS 91	EN 3	950	Yes	180 - 15°	15 - 0°	No	No	Optional (RF)
TS 90 Impulse	EN 3/4	1100	Yes	160 - 15°	15 - 0°	No	No	Optional



reddot design award
winner 2005

TS 97



TS 93



TS 91 & TS 92



TS 90 Impulse



Features

- Non Handed Design
- RF - Hold Open Unit*
- EMF - Electro Mechanical Hold Open*
- RMZ - Smoke Detector*
- EMR - Electro Mechanical Hold Open with Integral Smoke Detector*
- Finish : Silver
- Special finishes*

*Available on request



Door Closer

Cam Action Technology

The dormakaba concealed door closer has ushered in a new era in door closer technology. The closer body and slide channel are so compact that they can be installed out of sight in doors and their frames. These devices offer the same high quality expected of dormakaba door closers, as characterised by their ease of operation for the user, and wide range of functions. The doorclosers are manufactured as per European Standard EN 1154.

All the doorclosers are tested for durability of 500,000 cycles.

Model	Closing Force	Max. Door Width	Door Weight	Fire Rated	Closing Speed (Valve)	Latching Speed (Valve)	Door Thickness	Hold-open
ITS 96	EN (2-4)	1100	130kg	Yes	120 - 0°	7 - 0°	≥ 40mm	Optional - RF / EMF
	EN (3-6)	1400	180kg	Yes	120 - 0°	7 - 0°	≥ 50mm	Optional - RF / EMF
ITS 915	EN 4	1100	80kg	Yes	115 - 15°	15 - 0°	≥ 45mm	Optional



ITS 96



ITS 915



Features

- Non Handed Design
- Cushioned Limit stay
- RF - Hold Open Unit
- EMF - Electro Mechanical Hold Open
- Finish : Silver





Door Closer

Rack & Pinion Technology

The dormakaba rack and pinion door closer is the most widely used technology. The doorclosers are manufactured as per European Standard EN 1154.

All the doorclosers are tested for durability of 500,000 cycles.

Model	Closing Force	Max. Door Width	Fire Rated	Closing Speed (Valve)	Latching Speed (Valve)	Backcheck	Delayed Action	Hold-open
TS 83	EN (3-6)	1400	Yes	180 - 15°	15 - 0°	Yes	Yes	Optional with On/Off Switch
	EN 7	1600	Yes	180 - 15°	15 - 0°	Yes	No	Optional with On/Off Switch
TS 89	EN (3-6)	1400	Yes	180 - 15°	15 - 0°	No	No	Optional
TS 73V	EN (2-4)	1100	Yes	180 - 15°	15 - 0°	Yes	No	Optional with On/Off Switch
TS 72	EN (2-4)	1100	Yes	180 - 15°	15 - 0°	No	No	Optional
TS 71	EN 3/4	1100	Yes	180 - 15°	15 - 0°	No	No	Optional
TS 68	EN 2/3/4	1100	Yes	180 - 15°	15 - 0°	No	No	Optional
TS 77	EN 3	950	No	180 - 20°	20 - 0°	No	No	Optional



TS 83



TS 89



TS 73V



TS 72



TS 71



TS 68



TS 77



Features

- Non Handed Design
- Finish : Silver
- Special finishes*

*Available on request

EN Size	Recommended Door Leaf Width (mm)	Door Mass (Kg)
1	750	20
2	850	40
3	950	60
4	1100	80
5	1250	100
6	1400	120
7	1600	160

Door Coordinators

Door coordinators are used on a pair of Self-closing doors when there is a need to make the doors close in a sequential order.

Features

- Non Handed Design
- Manufactured according to EN 1158

G96 GSR Slide Channel Door Coordinator for ITS 96



SR 490 Door Selector



G-GSR Door Coordinator



390G Gravity Type Door Coordinator



SR 390 Door Coordinator & MK 396 Carry bar - Surface Mounted



Door Closer Accessories

G96 N20P Slide channel
for ITS 96
- Double action door



Hold open unit
for G-N / G96



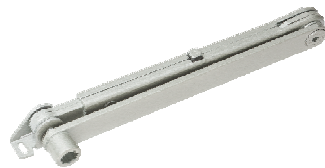
ITS 915 Hold open
mechanism



TS 90 Hold open
mechanism



Hold open arm with
On/Off feature



Hold open arm without
On/Off feature



Cushion limit stay
for G-N



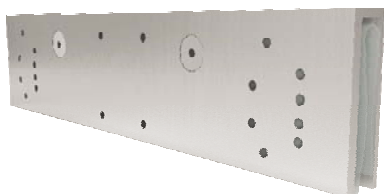
Cushion limit stay
for TS 90



Parallel arm bracket



Saddle plate



Floor Spring

Successfully tailored to satisfy the special requirements governing floor springs for double action doors, dormakaba floor springs offers a particularly shallow design and thus all the advantages of a reduced installation depth. With two closing ranges and a choice of models, the floor spring can fulfill virtually any application requirement while providing all the reliability associated with assured quality from dormakaba. The floor springs are manufactured as per European Standard EN 1154.

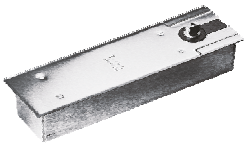
All the door closers are tested for durability of 500,000 cycles.

Model	Closing Force	Max. Door Width	Door Weight	Fire Rated	Closing Speed (Valve)	Latching Speed (Valve)
BTS 80	EN 6	1400	300kg	Yes	175 - 0°	-
	EN 4	1100	300kg	Yes	175 - 0°	-
	EN 3	950	300kg	Yes	175 - 0°	-
BTS 75V	EN (1-4)	1100	120kg	Yes	175 - 15°	15 - 0°
BTS 84	EN 4	1100	100kg	No	130 - 0°	130 - 20°
BTS 65	EN 4	1100	100kg	No	130 - 0°	130 - 20°
RTS 85	EN 4	1100	100kg	No	130 - 20°	130 - 0°
	EN 5	1250	110kg	No	130 - 20°	130 - 0°



BTS 80

Universal application, individual functions and assured quality

**Features**

- Proven, robust design capable of withstanding leaf weights of upto 300kg
- Constant, temperature-independent closing cycle
- Highly efficient mechanism gives maximum user convenience

BTS 75V

Faster aligned fit

**Features**

- Constant, temperature-independent closing cycle withstanding leaf weights of upto 120kg
- Highly efficient mechanism gives maximum user convenience
- Slim product range offering all functions
- Easy installation

BTS 84

Double action floor spring

**Features**

- Thermo constant smooth operation
- High mechanical efficiency for easy door opening
- Proven, robust unit for door weights upto 100kg
- Concealed unit for invisible installation
- Minimum floor recess dimension

BTS 65

Light Traffic Double Action Doors

**Features**

- Smooth closing operation virtually temperature immune
- Optional integrated single-point hold-open at 90°
- Rugged construction for door weights upto 100kg
- Minimum floor recess dimension

RTS 85

Transom concealed door closer

**Features**

- Thermo constant smooth operation
- High mechanical efficiency for easy door opening
- Proven, robust unit for door weights upto 100kg
- Concealed unit for invisible installation
- Minimum floor recess dimension



Floor Spring Accessories

BSR door coordinator for BTS 80



Closer arm for single action doors



Closer arm for double action doors



Closer arm for double action doors, end load



Floor pivot sets



Aluminium cover cap for top center



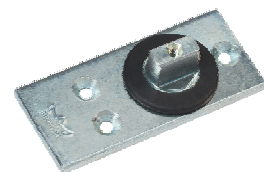
Aluminium cover cap for bottom strap - DIN left



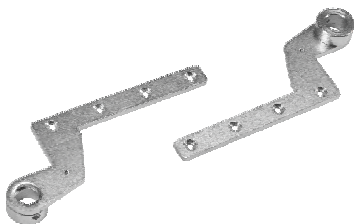
Aluminium cover cap for bottom strap - DIN right



Floor pivot bearing



Top center



Bottom strap



Locks



Wide Stile Locks

dormakaba locks offer the very highest standard of quality and functional reliability. With the use of high-grade materials, precise production techniques and a comprehensive quality management system, all dormakaba locks meet demanding technical specifications. Additionally, locks conforming to the technical requirements of DIN 18251 and EN 12209 also offer unbeatable ease of use and security features.

271/281/371/381 Sash Lock



Features

- Backset : 55mm
- CTC : 72mm
- 20mm Square forend
- Finish : SSS

275/285/375/385 WC Lock



Features

- Backset : 55mm
- CTC : 78mm
- 20mm Square forend
- Finish : SSS

278/288/378/388 Dead lock



Features

- Backset : 55mm
- 20mm Square forend
- Finish : SSS

279/289/379/389 Latch lock



Features

- Backset : 55mm
- 20mm Square forend
- Finish : SSS

Fire Rated (200)	Non- Fire Rated (200)
281	271
288	278
289	279
285	275
Fire Rated (300)	Non- Fire Rated (300)
381	371
388	378
389	379
385	375

200 Series

Grade EN 12209 - 2

Latch / Dead Bolt for 270 Series - Solid Metal Nickel Plated

Latch / Dead Bolt for 280 Series - Stainless steel

Forend SSS - SS 304

300 Series

Grade EN 12209 - 3

Latch - Stainless steel

Dead bolt - Stainless steel

Forend SSS - SS 316

Clamp follower - 8mm

Follower bearing - Steel bushes

Anti-saw protection

Anti-picking shield

Fixing holes - Bushed

Narrow Stile Locks

dormakaba narrow stile locks offer compelling benefits, thanks to assured high quality and functional integrity in combination with long service lifetimes. Through high-grade materials, careful manufacturing and a comprehensive quality management system, these products are able to satisfy all technical requirements.

952 Narrow Stile Sash Lock



Features

- Narrow stile sash lock
- Backset: 25, 30, 35mm
- CTC : 92mm
- Non handed
- 24mm square forend
- As per EN 12209
- Forend finish : SSS

917 Narrow Stile Dead Lock



Features

- Narrow stile dead Lock
- Backset: 25, 30, 35mm
- Non handed
- Bolt projection : 20mm
- 24mm square forend
- As per EN 12209
- Forend finish : SSS

936 Narrow Stile Latch Lock



Features

- Narrow stile latch lock
- Backset: 25, 30, 35mm
- Non handed
- 24mm square forend
- As per EN 12209
- Forend finish : SSS

985 Narrow Swing Door Lock



Features

- Narrow stile latch lock
- Backset: 25, 30, 35mm
- Non handed
- 24mm square forend
- As per EN 12209
- Forend finish : SSS

NSL 100



Features

- Narrow stile latch lock
- Backset: 25 & 35mm
- CTC: 72mm
- 20mm square forend
- As per EN 12209
- Forend finish : SSS

NDL 100



Features

- Narrow stile latch lock
- Backset: 25 & 35mm
- Non-Handed
- 20 mm square forend
- As per EN 12209
- Forend finish : SSS

NHL 100



Features

- Narrow stile latch lock
- Backset: 30mm
- Non-Handed
- Square forend
- As per EN 12209
- Finish : SSS



Escape Locks

dormakaba Escape locks offer compelling benefits, thanks to assured high quality and functional integrity combined with long service lifetimes. With high-grade materials, careful manufacturing and a comprehensive quality management system, these products are able to satisfy virtually all the technical requirements ever likely to arise. Conforming to BS EN 12209, BS EN 179 or DIN standards, dormakaba locks offer unbeatable performance, safety and security.

180 Mortise lock



Features

- Emergency Escape Lock
- Backset: 55mm
- Forend width : 20mm
- DIN Left/Right
- DIN 18650 for fire and smoke check doors
- Forend finish : SS

181 Mortise lock



Features

- Emergency Escape lock and key operated latch
- Backset : 55mm
- Forend width : 20mm
- DIN Left/Right
- DIN 18650 for fire and smoke check doors
- Forend finish : SS

182 Mortise lock



Features

- Escape lock with split 9 mm square follower
- Backset : 55mm
- Forend width : 20mm
- DIN Left/Right - outward / inward opening
- DIN 18650 for fire and smoke check doors
- Forend finish : SS

183 Mortise lock



Features

- Escape lock
- Backset : 55mm
- Forend width : 20mm
- DIN Left/Right - outward / inward opening
- DIN 18650 for fire and smoke check doors
- Forend Finish : SS

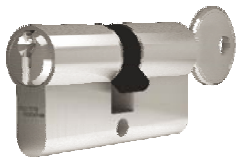
Cylinders



Cylinders

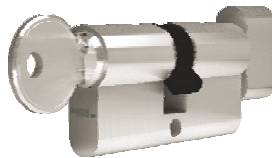
dormakaba europrofile cylinders are – literally – the “key” to locking system security on both external and internal doors. From the quality basic cylinder with conventional flat key system to high-grade reverse key versions for elevated security requirements, dormakaba has a wide range of options offering excellent resilience and effective anti-tamper protection. High-quality, matched materials ensure excellent corrosion and wear resistance, while certified manufacture provides precise, reliable functionality and durability. Trust dormakaba for technically sophisticated solutions in a comprehensive cylinder portfolio – with the right level of protection aligned to individual requirements and strong performance throughout.

Euro Profile Cylinder



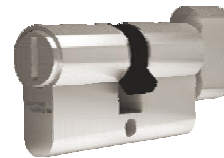
Features

- 6 Pin EPC
- Lengths : 60, 70, 80, 90mm
- Approved to EN 1303
- Both side key operation
- Finish : Satin nickel plated



Features

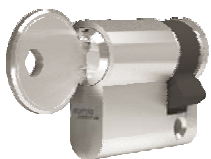
- 6 Pin EPC
- Lengths : 60, 70, 80, 90mm
- Approved to EN 1303
- One side Key Operation
- Other side Thumb Turn
- Finish : Satin nickel plated



Features

- 6 Pin EPC
- Lengths : 60mm
- Approved to EN 1303
- Thumb turn coin release function
- Finish : Satin nickel plated

Half Cylinder



Features

- Lengths : 42mm
- Approved to EN 1303
- Finish : Satin nickel plated

High Security Cylinders

dormakaba high security cylinders with reversible keys offer highest user convenience, as the key has no top or bottom side. As opposed to serrated keys they can be inserted into the cylinder lock from either side. dormakaba high security cylinders are ergonomically built and meet the highest security standards. Our precision technology guarantees, that these cylinders are robust and require little maintenance, in accordance with EN1303 Key Related Security Grade 6 and with additional security elements Attack Resistance Grade 2.

PENTA Cross



Features

- Patented reversible key system upto 2036
- Protection against duplication/illegal keys
- Upto 22 pins in 5 radically arrange pin rows
- Certification : Kitemark (UK) / GOST (Russia)
- 867 Trillion possible key coding combinations
- Modular core housing technology
- Anti Picking protection
- Anti Drilling protection
- Anti Bump protection
- Movable security element provides higher security and protection against copying of keys
- Can be upgraded to an electronic access control systems with RFID transponder in the key head.
- Key issue protection with security card
- One key platform for various lock types

Expert Plus



Features

- Patented reversible key system upto 2033
- Protection against duplication/illegal keys
- Upto 22 pins in 4 radically arrange pin rows
- Certification : Kitemark (UK) / GOST (Russia)
- 907 billion possible key coding combinations
- Modular core housing technology
- Anti Picking protection
- Anti Drilling protection
- Anti Bump protection
- Can be upgraded to an electronic access control systems with RFID transponder in the key head.
- Key issue protection with security card
- One key platform for various lock types

p Extra+



Features

- Patented serrated key system upto 2032
- Protection against duplication / illegal keys
- 6 Pin cylinder
- Certification : Kitemark (UK) / GOST (Russia)
- Approx 1600 combinations per profile
- Modular core housing technology
- Anti Picking protection
- Anti Drilling protection
- Anti Bump protection
- Branch and groove design, active blocking pin for protection against illegal keys
- Key issue protection with security card
- One key platform for various lock types

In all high security cylinders, master key system is free add on and is inbuilt part of the cylinder

Functions for High Security Cylinder

Self changing cylinder – the cylinder with 3 lives



Double key override function



Emergency override key function



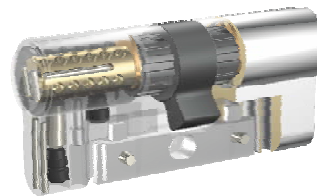
Secure Access Temporary – SAT



Keyway in normal position: 6 o'clock

Keyway in service position: 8 o'clock

Extreme protection – increased burglary protection



Pulling and drilling protection

Thermally insulated cylinder – TIC



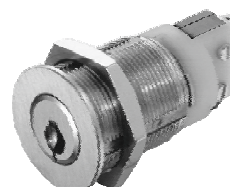
Protection mechanism against dust, weather and insects



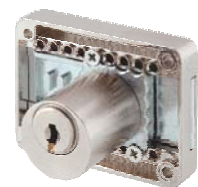
Cylinder types

- Double, single and thumb turn cylinders in Euro profile, Swiss round profile, Scandinavian and Union oval profiles, French round profiles
- Outside and inside cylinders for surface mounted locks
- Furniture cylinders and locks
- Camlock cylinders
- Key switch cylinders
- Elevator control cylinders
- Padlocks
- Window handles and olives
- Key deposit tubes
- Key storage cabinets

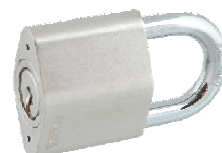
Elevator control and switch cylinder



Furniture cylinders



Padlock



Lever Handles



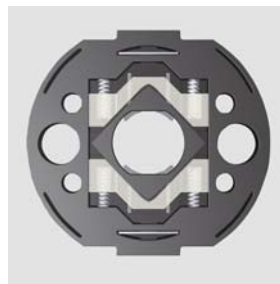
Premium Lever Handle

The dormakaba Premium range of door furniture offers aesthetically and technically sophisticated solutions capable of meeting high project related demands. With the Premium range, identical lever handles can be combined with precisely matched roses, escutcheons and backplates for use on timber, narrow stile and toughened glass doors. The system comprises three components that can be flexibly combined with one another: Lever handles, roses/backplates and a square section spindle. The entire Premium range is able to satisfy virtually any design related requirement. From the modern to the classic. The wide choice of models offers an impressive indication of the high standard of quality available with the dormakaba brand.

Features

- Click and go for fast fixing
- Approved to EN 1906 & EN 179
- Fire rated
- Lever handles with Braille inscription*
- Material : Stainless steel / Aluminium
- Special Finishes*

*Available on request



Horizontal return springing technology



Long support lugs for timber doors

The Premium range of timber doors

Premium 8100



Premium 8156



Premium 8906



Premium 8974



Premium 8990



Premium 8998



The Premium range of narrow stile doors

Premium 8928



Premium 8871



Premium 8972



Plus Lever Handle

The dormakaba Plus range is characterised not just by its quality and design excellence but also its diversity. Hence, the Plus portfolio also contains a number of popular lever handle models for the project sector. Plus fittings are available as fire and smoke control furniture and the corresponding lever handle models designed for use as emergency exit devices are certified to EN 179.

Features

- Back to back fixing
- Approved to EN 1906
- Fire rated
- Finish : Satin Stainless steel

The Plus range of timber doors

Plus 8100



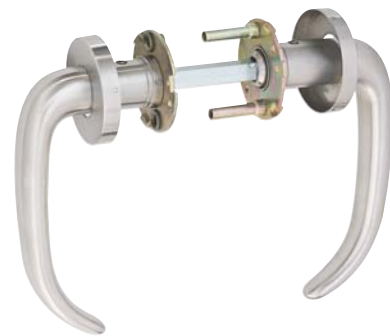
Plus 8906



Plus 8999



Plus 3020



Clear installation advantages with long support lugs.

The Plus range of narrow stile doors

Plus 8100



Plus 8100 V



Plus 8906



Plus 3548 V



Pure Lever Handle

Sophisticated design and functional quality are the characteristics of the dormakaba Pure range. The fittings excel in terms of both their technology and operating reliability. Manufactured from high-grade materials and carefully crafted, dormakaba Pure door furniture satisfies exacting demands with respect to stability, safety and corrosion resistance.

Features

- Back to back fixing
- Approved to EN 1906
- Finish : Satin Stainless steel

The Pure range of timber doors

Pure 8100



Pure 8906



Pure 8998



Pure 3020



Roses and backplates with integral springing

The Pure range of narrow stile doors

Pure 8100



Pure 8100 V



Pure 8906



Pure 3548 V



DLH

Tubular series lever handle

Inspired by design, innovation and functionality, we are pleased to present our Lever sets catalogue. The DLH tubular series excel in terms of operating reliability. Architects and designers may now be confident in selecting a quality well priced range with a distinctive design theme that will 'speak' throughout the whole project.

Features

- Hollow
- 8 mm spindle
- Through and through bolt fixing
- Material : SS304
- Finish : SSS/PSS/Antique brass

DLH008



DLH014



DLH015



DLH020



DLH022



DLH023



DLH029



DLH005



DLH006



DLH016



DLH021



DLH028



DLH031



DLH035



DLH036



DLS

Solid series lever handle

Inspired by design, innovation and functionality, we are pleased to present our Lever sets catalogue. The DLS solid series excel in terms of operating reliability. Architects and designers may now be confident in selecting a quality well priced range with a distinctive design theme that will 'speak' throughout the whole project.

Features

- Solid
- 8 mm spindle
- Through and through bolt fixing
- Material : SS304
- Finish : SSS/PSS/Antique brass

DLS101



DLS102



DLS119



DLS143



DLS158



DLS169



DLS103



DLS106



DLS111



DLS113



DLS116



DLS120



DLS121



DLS134



DLS137



DLS

Solid series lever handle

DLS162



DLS167



DLS170



DLS175



DLS178



DLS179



Pull Handles



Pull Handles

dormakaba offers a wide selection of pull handles for both tempered glass doors and solid material doors made of aluminum, wood, PVC, or mixed material: locking and non-locking ladder pulls, back-to-back pulls, customized handle solutions, and a variety of finishes and materials.

D Type



150 x 19mm
 200 x 19mm
 300 x 22mm
 350 x 25mm
 450 x 25mm
 600 x 32mm

H Type



600 x 32mm
 450 x 25mm
 600 x 32mm
 800 x 32mm
 1000 x 38mm
 1200 x 38mm

D Type Offset



350 x 25mm
 450 x 25mm
 600 x 25mm

Square



CTC 350mm
 CTC 450mm
 CTC 600mm
 CTC 1000mm
 CTC 1200mm

Offset Square



CTC 350mm
 CTC 450mm

Lockable Pull handle



1200 x 35mm
 1350 x 35mm
 1500 x 35mm

Features

- For glass, wood and aluminium doors
- Suitable for 35mm thick door, Extended Spindle available upto 65mm door thickness
- SS 304 / SS 316
- Finish : Satin stainless steel

Hinges



Concealed Hinges

CONCEALEO® door hinges are setting the trend. Even though demands for functionality are growing - modern door hinges cater to a wide range of load bearing capacities - the hardware needs to be as invisible as possible from the outside. With the CONCEALEO® product range, dormakaba provides an all-embracing product line-up. With load bearing capacities of 40 to 350 kilograms per pair, it covers the entire door spectrum from the simple domestic door to the highly complex commercial property door. The choice of material provides the basis for creating a range of concealed hinges for all door weights. dormakaba only uses true steel for the hinge's body which is machined, not cast.

Features

- Three dimensional adjustable hinge
- 180° opening angle
- UL listed and fire rating versions also available
- Material : Steel/Aluminium
- Approved to EN 1935
- 11 different finishes available



Model	Load carrying capacity (kg)
GS 40	40
FA 60	60
EA 60	60
DA 100	100
DH 120	120
DS 120	120
CA 150	150
CH 200	200
BH 200	200
CS 300	300
AH 300	300
AS 350	350



Hinges

Hinges play a crucial and decisive part on the function of the door and to meet different design and functional requirements. dormakaba has an extensive product range to select from. These butt hinges are tested for performance as per EN 1935. All hinges shall be template drilled and suitable for both metal and timber doors.

BB 4330



Features

- 5 Knuckle 2 Ball bearing butt hinge
- Material : Stainless steel
- Approved to EN 1935
- Finish : SSS

Fire Rated	Non- Fire Rated	Dimension
	BB 5430	5" x 4" x 3mm
	BB 5353	5" x 3.5" x 3mm
3094 F	BB 4430	4" x 4" x 3mm
3091 F	BB 4353	4" x 3.5" x 3mm
3090 F	BB 4330	4" x 3" x 3mm
	BB 4325	4" x 3" x 2.5mm
	BB 4320	4" x 3" x 2mm





Panic Hardware



Panic Hardware

dormakaba offers a comprehensive range of high-quality panic hardware fittings with horizontal and vertical locking for doors in emergency exits and escape routes – applications in which safety, reliability and aesthetic attractiveness are indispensable requirements. dormakaba's PHA and PHB products cover in full the hardware requirements that arise in public-frequented facilities such as hospitals, universities and schools, concert halls, shopping malls, hotels and administrative buildings.

PHB 3000

Touch Bar



PHA 2000

Push Bar



Features

- One/Two/Three/Four point locking
- Non Handed & Fire rated
- Security Anti-Thrust Latch
- Dogging available
- Unlocking via electric Strike
- Monitoring switch on actuating Bar
- Approved to EN 1125

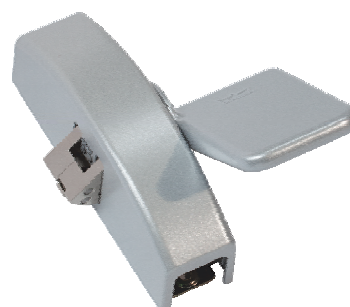


Exit Pad

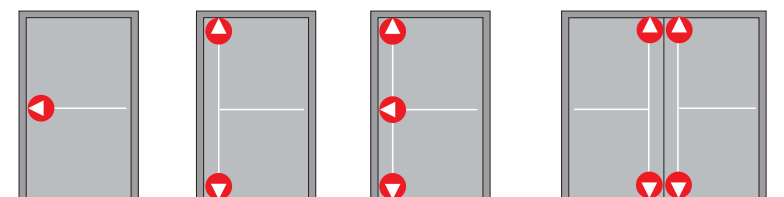
The fittings of the Exit Pad series are high-quality emergency exit devices for doors in escape routes and can be combined with the components of the PHA 2000/PHB 3000 series. They are used in buildings with no public pedestrian traffic. It is expected that people using the building are familiar with the exits and their fittings, avoiding the likelihood of a panic situation developing. All products of the Exit Pad series have been tested to and certified compliant with EN 179.

Features

- One/Two point locking
- For door widths upto 1300mm
- Non handed
- Fire rated
- External fittings can be used
- Approved to EN 179
- Security anti thrust latch
- Unlocking via electric strike



Types of locking

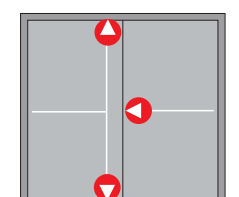


One point locking

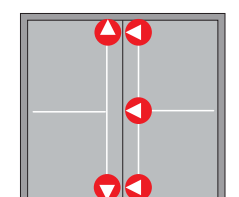
Two point locking

Three point locking

Four point locking



Three point locking over rebated door



Five point locking over rebated door



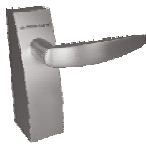
External Trim and Glass Kit

External fitting with lever handle or knob, suitable for use with PHA 2000 and PHB 3000. All PHT external fittings or non-handed and carry the CE mark dormakaba's PHA 2000 and Exit Pad devices can be fitted to a wide range of toughened glass doors.

PHT 01



PHT 03



PHT 05



PHT 06



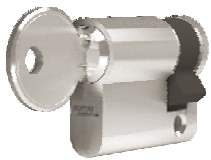
PHT 07



Features

- External fitting with lever handle or knob
- Suitable for use with PHA 2000 and PHB 3000
- All PHT external fittings and non-handed and carry the CE mark

Euro profile half cylinder



Features

- EPC half cylinder
- Lengths : 42mm
- Approved to EN 1303
- Finish : Satin nickel plated

PHA Glass kit



Features

- PHA Glass kit A/B/C/D/E/F
- For doors in all glass or framed assemblies
- For 8 to 10 mm toughened safety glass
- Standard stainless steel design
- Approved to EN 1125

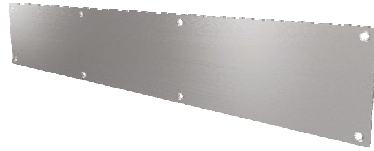


Accessories

Push Plate



Kick Plate



Signage Plate



Eye Viewer without flap



Eye Viewer with flap



Dust Excluding Socket



Flush Bolt -
Wooden & Metal Door



Flush Pull -
Oval



Accessories

Flush Pull - Circular



Flush Pull - Rectangular



Spring Loaded Security Chain



Door Guard



Door Stop - Half Dome



Door Stop - Wall Mounted



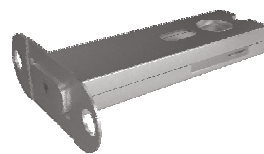
Door Stop - Wall Mounted with Coat Hook



Door Stop - Wall and floor Magnetic



Mortise Shaft Lock

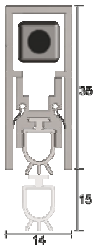


Seals

For doors and windows to function, they must have gaps between their edges and their frame, these gaps allow intrusion of noise, smoke, fire, rain, insects etc. The solution is to get the right seal for right door type which seals the gap around the doors when closed to seal against combination of intrusions and leakages. Properly fitted, they can provide a complete and continuous seal for all door type that will not impede normal use.

Automatic Door Bottom Seals

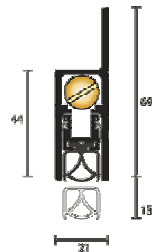
IS8010si



Features

- Concealed fixing
- Location : Single and double butt hinged doors
- Available lengths : 820, 920, 1070, 1220mm
- Seal Material : Silicon rubber
- Fire rated

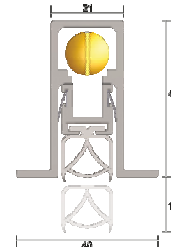
IS8090si



Features

- Face mounted or semi mortised
- Location : Single and double butt hinged doors
- Available lengths : 920, 1070, 1220, 1500mm
- Seal Material : Silicon rubber
- Fire rated

IS8100si

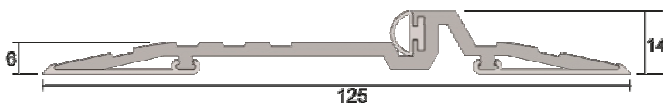


Features

- Concealed heavy duty seal
- Location : Single and double butt hinged doors
- Available lengths : 920, 1070, 1220, 1500mm
- Seal Material : Silicon rubber
- Fire rated

Threshold Plate Seals

IS4220



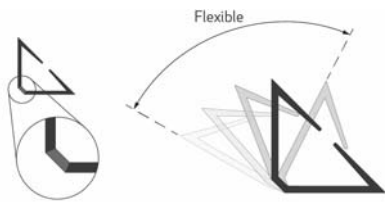
Features

- Location : Door sill
- Seal size : Available in stock lengths
- Seal Material : Silicon rubber
- Fire rated

Seals

Perimeter Seals

IS1212BT

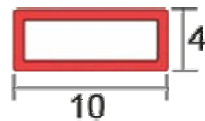


Features

- Location : Around rebated frames of single or double butt hinged doors
- Seal size : Available in doorset sizes
- Seal Material : Rigid PVC
- Fire rated

Intumescent Seals

KP1004

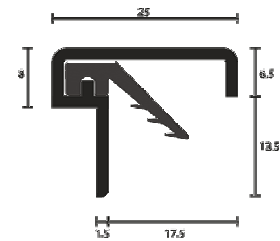


Features

- Location : Mortised into the door or frame stiles and head
- Seal size : Available in stock lengths
- Seal Material : Intumescent infill with flexible PVC Holder

Astragal Seals

IS7060si



Features

- Location : Meeting stile of double butt hinged doors
- Seal size : Available in stock lengths
- Seal Material : Silicon rubber

Electrified Hardware



Electrified Hardware

EM Series

EM electromagnetic locks are reliable and convenient door locking devices that can be readily combined with an access control system. The EM product range offers the right solution for a wide array of structural situations and applications. dormakaba offers a complete portfolio of EM electromagnetic locks. Thanks to the materials selected and comprehensive long-time testing at the development stage, these too meet in full the quality standards set by dormakaba.

Abbreviations

A = Lock status sensor
 D = Shear lock magnets
 F = Front-mounted
 GL = Electromagnetic lock with LED light panel
 H = Surface-mounted
 M = Mortise-mounted



Data and features

Type	Features					Door type					
	Holding force class	Installation	Dual voltage 12/24 V DC	green/red LED	Lock status sensor	Single/Double-leaf doors	Outswing doors	Inswing doors	Glass doors	Non-drill through	Order No.

Premium Standard Locks

EM 1800 AH	1800 N	Surface	●	-	●	Single	-	●	●	●	19860000
EM 1800 AM	1800 N	Mortise	●	-	●	Single	-	-	-	-	19860001
EM 3000-GL AH	3000 N	Surface	●	●	●	Single	●	●	●	●	19860103
EM 3000-T AM	2500 N	Mortise	●	-	●	Single	-	-	-	-	19860110
EM 5300-GL AH	5300 N	Surface	●	●	●	Single	●	●	-	●	19860206
EM 5300-2 GL AH	5300 N x2	Surface	●	●	●	Double	●	●	-	●	19860203

Weather-resistant Locks

EM 7500-F AH	7500 N	Surface	●	-	●	Single	-	-	-	-	19860300
EM 7500-S AH	7500 N	Surface	●	-	●	Single	-	-	-	-	19860301

Shear Locks

EM 7500-D AM	7500 N	Mortise	●	-	●	Single	-	-	-	-	19860320
EM 15000-D AM	15000 N	Mortise	●	-	●	Single	-	-	-	-	19860420

Hybrid Locks

EM 6900-GL AH B	8000 N	Surface	●	●	●	Single	-	-	-	-	19860241
EM 6900 AM B	8000 N	Mortise	●	-	●	Single	-	-	-	-	19860242

● yes - no

Note: The holding force on the door is dependent on the specific type of installation.

Electrified Hardware

EM Comfort Line Series

EM Comfort Line (EMC) offers complementing locking solution for security access control systems and emergency exit doors. All locks are fail safe mode, meaning that in case of power failure the doors will release ensuring effective emergency exit. Available in all standard holding force fulfilling the majority of security demands.

Abbreviations

A = Lock status sensor

D = Shear lock magnets

F = Front-mounted

GL = Electromagnetic lock with LED light panel

H = Surface-mounted



Type	Features					Door Type			
	Holding force	Installation	Voltage 12/24 V DC	Lock status sensor	LED green/red	Single-/ Doubleleaf doors	Outswing doors	Inswing doors	Glass doors
							L-bracket	L+Z bracket	U-bracket
EMC 400 AH	1179 N	Surface	●	●	–	Single	●	●	●
EMC 600 ALH	2668 N	Surface	●	●	●	Single	●	●	●
EMC 600 AM	2668 N	Mortise	●	●	–	Single	–	–	–
EMC 1200 ALH	5337 N	Surface	●	●	●	Single	●	●	–
EMC 600-2 ALH	2668 N x 2	Surface	●	●	●	Double	●	●	–
EMC 1200-2 ALH	5337 N x 2	Surface	●	●	●	Double	●	●	–

● yes – no

Note: The holding force on the door is dependent on the specific type of installation.



Electrified Hardware

Electric Strikes

dormakaba electric strikes ensure door security in private, public and commercial premises, are suitable for use with many different locks and door types and are available in all conventional operating voltages. Whether for standard doors, fire and smoke check doors or for doors in emergency and escape routes, you will be able to find the right model to match your particular requirements – all quality-assured by dormakaba.

A = Holding function

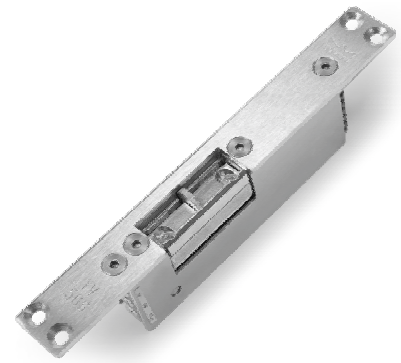
If the electric strike lever handle is activated momentarily, the mechanism in the electric strike responds, releasing the strike until after the door has been opened. Once-off entry is possible

E = Unlocking

A small lever switches the electric strike off. The door is fully accessible without any signalling from the electric strike.

RR = Monitor contact

A floating contact supplies
"Door open" / "Door closed" status signals



Data and features

Electric Strikes Series														
	Basic	Lucky Basic 448	Basic-Safe	Basic-Radius	Basic-Radius Safe	DES 72x	DES 731	Basic-Small	Smoke	Lucky Smoke 448	Fire 447	Lucky Fire 448	DES 300	DES 400
Standard doors	•	•	•	•	•	•	•	-	-	-	-	-	-	-
Doors with thermal-break profiles	-	-	-	-	-	-	-	•	-	-	-	-	-	-
Smoke protection doors	-	-	-	-	-	-	-	-	•	•	•	•	-	-
Fire protection doors	-	-	-	-	-	-	-	-	-	-	•	•	-	-
Symmetrical housing	•	•	•	•	•	-	-	-	•	•	•	•	•	•
Asymmetrical housing	-	-	-	-	-	•	•	•	-	-	-	-	-	-
Non-handed	•	•	•	•	•	•	•	-	•	•	•	•	•	•
Radius latch	-	-	-	•	•	-	-	-	-	-	-	-	-	-
Fail-safe model	-	-	•	-	•	-	•	-	-	-	-	-	-	-
Fail-secure model	•	•	-	•	-	•	-	•	•	•	•	•	-	-
Fail-Safe/Fail-secure switchable	-	-	-	-	-	-	-	-	-	-	-	-	•	•
Unlocking function (E)	•	-	-	•	-	-	-	-	-	-	-	-	-	-
Holding function (A)	•	-	-	•	-	-	-	-	-	-	-	-	-	-
Monitor contact (RR)	•	•	•	•	•	•	•	-	•	•	•	•	•	•
Latch guide Easy Adapt	o	•	o	-	-	-	-	-	o	•	o	•	-	-
Anti-tamper contact	-	-	-	-	-	-	-	-	-	-	-	-	-	•

• = yes - = no o = option

Electrified Hardware

Anti Panic Locks

Doors that lock immediately after each closure with the deadbolt being automatically advanced – this is the clear advantage offered by the automatic action locks SVP/SVZ. At the same time, the clawbolt latch engages providing a "two point locking". The emergency escape function of the SVP locks ensures that the door can be easily opened at any time from the inside simply by pressing the lever handle.

SVP 4000



Features

- An electrically monitored switch lock with integrated tamper proof detectors for monitoring the latch and deadbolt
- Backset : 55-65mm
- CTC : 72mm
- DIN Left/Right
- Fire rated

SVP 5000



Features

- A purely mechanical lock with an emergency escape function
- Backset : 55-65mm
- CTC : 72mm
- DIN Left/Right
- Fire rated

SVP 2000



Features

- Motor lock with a sequential control for maximum safety and tamper-proof detectors
- Backset : 55-65mm
- CTC : 72mm
- DIN Left/Right
- Fire rated

SVP 6000



Features

- An electrically switch-monitored lock with a split follower for the electrical engaging/ disengaging of the external lever handle and tamper-proof detectors
- Backset : 55-65mm
- CTC : 72mm
- DIN Left/Right
- Connection : 12 V DC or 24 V DC, stabilized, current consumption: max. 0.4 A or 0.2 A, contact rating: max. 30 V DC, 100 mA.
- Fire rated

SVZ 6000



Features

- Access control lock same as with the SVP 6000 but without the emergency escape function
- Backset : 55-65mm
- CTC : 72mm
- DIN Left/Right
- Fire rated





Dorma and Kaba joining forces

door-hardware-en-sa-1020-v1.1
Subject to change without notice

Access Solutions



Door Hardware
- DHW



Interior Glass
Systems - IGS



Entrance Systems
- ENS



Lodging Systems
- LGS



Safe Locks
- SAL



Electronic Access &
Data - EAD



Mechanical Key
Systems - MKS



Service
- SVC

Wall Solutions



Movable Walls

dormakaba India Private Limited
Plot No. 48/3, Mahindra World City
8th Avenue, Anjur Village
Chengalpattu District
Tamil Nadu 603 002. INDIA
T +91 44 67 400 200

SERVICE TOLL FREE

1800 121 6414